

Runway Use Report

Chicago O'Hare International Airport

Period: February 2019

Time of Day: 10:00 p.m. to 7:00 a.m.



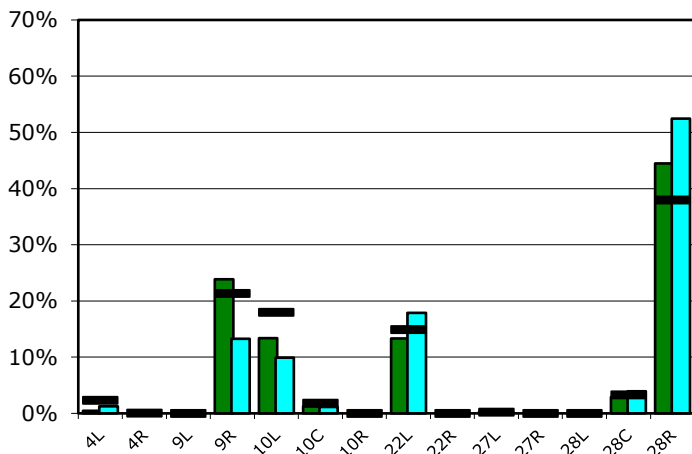
Runway Use (10 p.m. to 7 a.m.)

Source: Airport Noise Management System (ANMS)

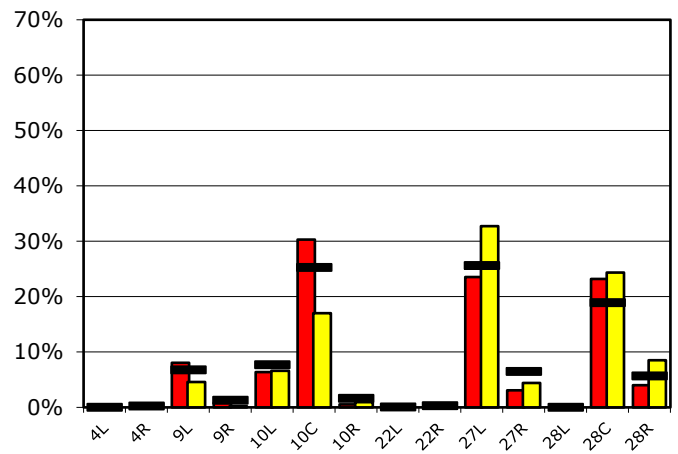
Runway Utilization

	4L	4R	9L	9R	10L	10C	10R	22L	22R	27L	27R	28L	28C	28R
Average Daily Departures														
February 2019	1	0	0	27	15	1	0	15	0	0	0	0	3	51
January 2019	1	0	0	14	10	1	0	19	0	0	0	0	4	55
12 Month Avg.	3	0	0	26	22	2	0	18	0	0	0	0	4	45
Average Daily Arrivals														
February 2019	0	0	12	1	9	45	1	0	0	35	5	0	34	6
January 2019	0	1	6	0	9	23	1	0	0	44	6	0	33	11
12 Month Avg.	0	0	11	2	13	41	3	0	0	42	11	0	31	9

Departures (10 p.m. to 7 a.m.)

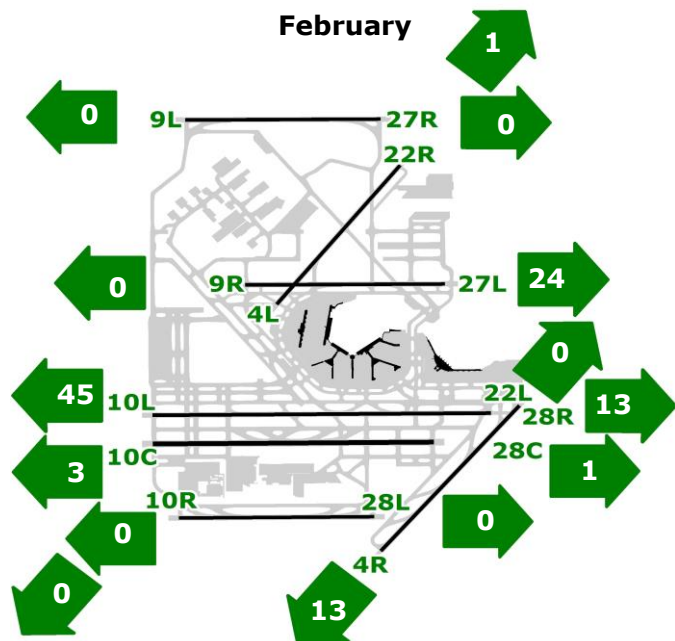


Arrivals (10 p.m. to 7 a.m.)



Percentage Departure Utilization

February



Percentage Arrival Utilization

February

