

**Aircraft Noise Report - Long Term Portable Noise Monitors**

Chicago O'Hare International Airport

Period: February 2021

Metric: Aircraft DNL



Site	Community	Monitored Noise Levels												Average
		Jan	Feb	Mar	Apr	May	Jun	Jul	Aug	Sep	Oct	Nov	Dec	
D	Chicago	<b>13</b>	<b>13</b>	<b>13</b>	<b>13</b>	<b>13</b>	<b>13</b>	<b>13</b>	<b>13</b>	<b>13</b>	<b>13</b>	<b>13</b>	<b>13</b>	<b>2013</b>
												58.9	57.6	58.3
		<b>14</b>	<b>14</b>	<b>14</b>	<b>14</b>	<b>14</b>	<b>14</b>	<b>14</b>	<b>14</b>	<b>14</b>	<b>14</b>	<b>14</b>	<b>14</b>	<b>2014</b>
		56.0	54.0	57.4	57.6	58.4	58.9	60.3	58.3	60.2	60.2	60.5	59.9	58.8
		<b>15</b>	<b>15</b>	<b>15</b>	<b>15</b>	<b>15</b>	<b>15</b>	<b>15</b>	<b>15</b>	<b>15</b>	<b>15</b>	<b>15</b>	<b>15</b>	<b>2015</b>
		58.8	56.0	58.6	59.5	60.4	60.0	59.5	59.7	58.3	57.9	58.2	59.2	59.0
		<b>16</b>	<b>16</b>	<b>16</b>	<b>16</b>	<b>16</b>	<b>16</b>	<b>16</b>	<b>16</b>	<b>16</b>	<b>16</b>	<b>16</b>	<b>16</b>	<b>2016</b>
		59.1	59.2	59.7	58.6	59.6	60.2	60.2	59.9	57.4	59.7	60.4	58.2	59.4
		<b>17</b>	<b>17</b>	<b>17</b>	<b>17</b>	<b>17</b>	<b>17</b>	<b>17</b>	<b>17</b>	<b>17</b>	<b>17</b>	<b>17</b>	<b>17</b>	<b>2017</b>
		59.0	59.3	58.2	58.3	58.2	60.2	58.6	59.7	58.3	60.4	60.1	60.4	59.3
		<b>18</b>	<b>18</b>	<b>18</b>	<b>18</b>	<b>18</b>	<b>18</b>	<b>18</b>	<b>18</b>	<b>18</b>	<b>18</b>	<b>18</b>	<b>18</b>	<b>2018</b>
		60.1	59.2	56.6	58.2	59.4	59.7	60.3	60.0	58.4	59.6	59.6	60.0	59.4
		<b>19</b>	<b>19</b>	<b>19</b>	<b>19</b>	<b>19</b>	<b>19</b>	<b>19</b>	<b>19</b>	<b>19</b>	<b>19</b>	<b>19</b>	<b>19</b>	<b>2019</b>
		57.8	58.8	62.0	--	--	59.2	59.0	58.6	59.6	59.6	59.5	61.6	59.8
		<b>20</b>	<b>20</b>	<b>20</b>	<b>20</b>	<b>20</b>	<b>20</b>	<b>20</b>	<b>20</b>	<b>20</b>	<b>20</b>	<b>20</b>	<b>20</b>	<b>2020</b>
		59.8	58.4	60.1	52.5	53.0	52.4	53.2	53.2	53.4	53.1	55.6	53.8	55.9
		<b>21</b>	<b>21</b>	<b>21</b>	<b>21</b>	<b>21</b>	<b>21</b>	<b>21</b>	<b>21</b>	<b>21</b>	<b>21</b>	<b>21</b>	<b>21</b>	<b>2021</b>
		50.9	46.7											49.3

--- No data due to monitor malfunction

Site D is located at 5801 N. Pulaski Road, Building K, Chicago. Distance to center of airport = 9.6 miles. Distance to threshold of Runway 9R/27L = 8.7 miles.

# Chicago O'Hare International Airport

## City of Chicago

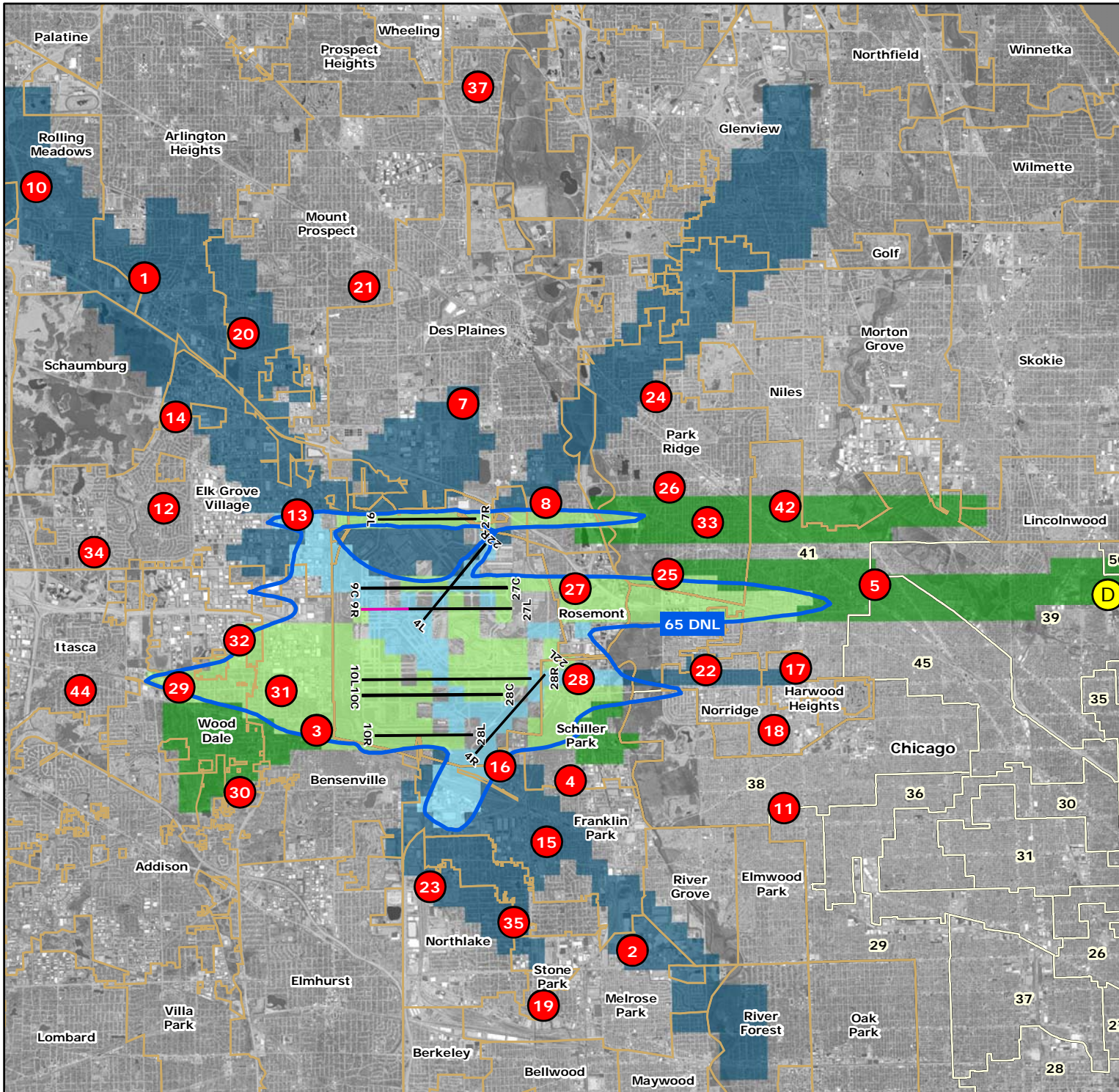
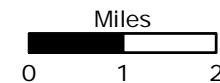
Lori E. Lightfoot, Mayor  
 Jamie L. Rhee, Commissioner of Aviation

## Permanent Noise Monitor Locations

### Legend

- Permanent Noise Monitors (36)
- Long Term Portable Noise Monitor Site (1)
- Existing Runways
- Future Runway
- O'Hare Modernization Program Build-Out Noise Contour (65 DNL)
- Projected Areas of Aircraft Noise Decreasing 3.0dB and Greater<sup>1</sup>
- Projected Areas of Aircraft Noise Decreasing 1.5dB to 3.0 dB<sup>1</sup>
- Projected Areas of Aircraft Noise Increasing 1.5dB to 3.0dB<sup>1</sup>
- Projected Areas of Aircraft Noise Increasing 3.0dB and Greater<sup>1</sup>
- Chicago Ward Boundaries
- Community Boundaries

<sup>1</sup> O'Hare Modernization Program Final Environmental Impact Statement, Appendix F, Build-Out - Exhibit 19, Page F-244



Note: Noise Contour and shading represents projections at OMP Build-Out, currently scheduled for 2021.