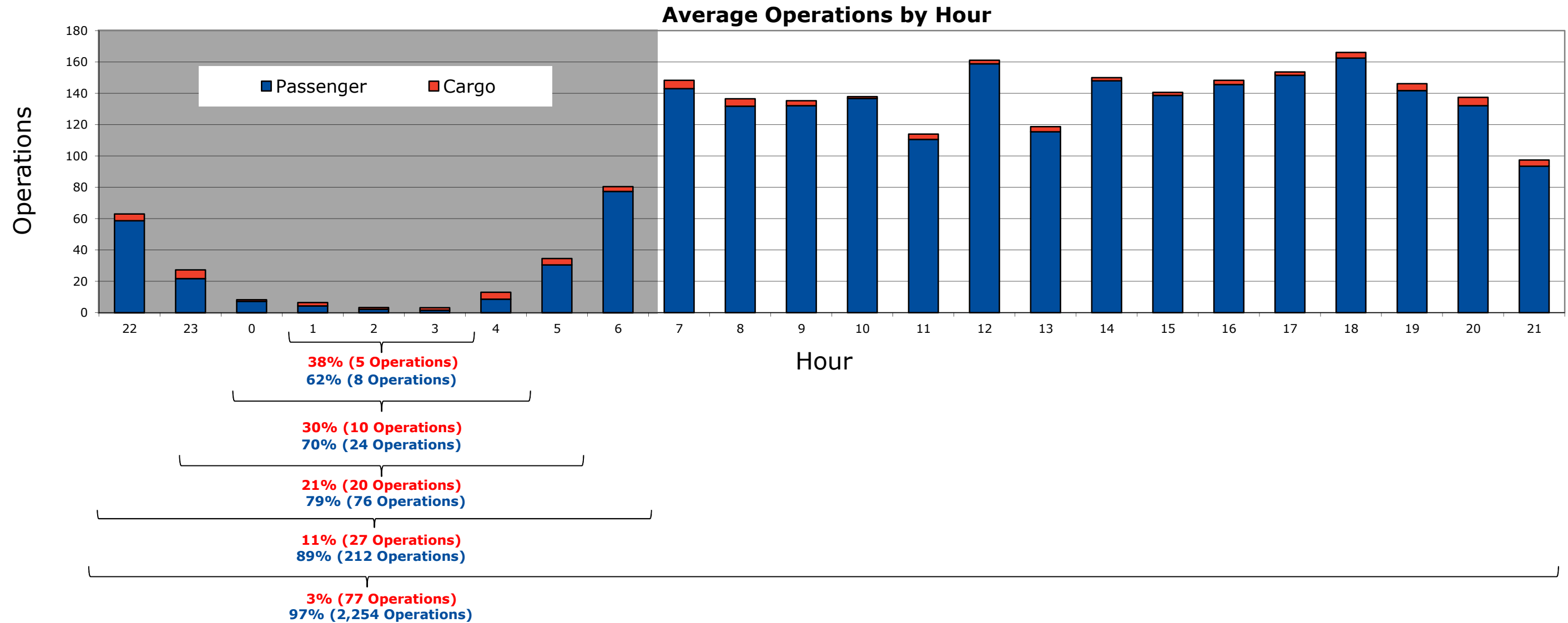


Hourly Operations Comparison

Chicago O'Hare International Airport

Period: December 13, 2015 through December 19, 2015

Time of Day: All Hours



| Operations by Hour | | | | | | | | | | | | | | | | | | | | | | | | | |
|--------------------|----|----|---|---|---|---|----|----|----|-----|-----|-----|-----|-----|-----|-----|-----|-----|-----|-----|-----|-----|-----|----|-------|
| Operation Type | 22 | 23 | 0 | 1 | 2 | 3 | 4 | 5 | 6 | 7 | 8 | 9 | 10 | 11 | 12 | 13 | 14 | 15 | 16 | 17 | 18 | 19 | 20 | 21 | Total |
| Cargo | 4 | 6 | 1 | 2 | 1 | 2 | 4 | 4 | 3 | 5 | 5 | 3 | 1 | 3 | 2 | 3 | 2 | 2 | 3 | 2 | 4 | 4 | 5 | 4 | 77 |
| Passenger | 59 | 22 | 7 | 4 | 2 | 2 | 9 | 30 | 77 | 143 | 132 | 132 | 137 | 111 | 159 | 115 | 148 | 139 | 146 | 151 | 162 | 142 | 132 | 93 | 2,254 |
| Total | 63 | 27 | 8 | 6 | 3 | 3 | 13 | 35 | 80 | 148 | 137 | 135 | 138 | 114 | 161 | 119 | 150 | 141 | 148 | 154 | 166 | 146 | 137 | 97 | 2,331 |

Nighttime Hours (10 p.m. to 7 a.m.)

Totals may not add due to rounding

Source: Airport Noise Management System (ANMS)